

## FIBER PIGTAILS

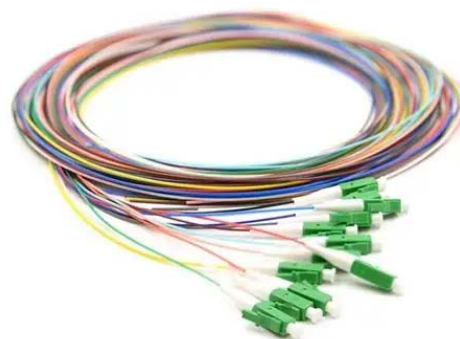
### Applications :

- Data Center
- Gigabit Ethernet
- Telecommunication networks
- Video
- Multimedia
- Military



### Availability :

- Simplex, 900um
- PC or APC standard
- Various boot types for selection



### Features :

- High temperature stability
- Good exchangeability
- Good Durability
- Low insertion loss and back reflection loss

### Specification :

	<b>SINGLEMODE - OS2</b>	<b>MULTIMODE - OM3</b>
Insertion Loss	Typical $\leq 0.2$ dB, Maximum $\leq 0.3$ dB	$\leq 0.25$ dB
Return Loss	$\geq 50$ dB (PC) $\geq 55$ dB (APC)	
Repeatability	$\leq 0.1$	
Durability	$\leq 0.2$ dB typical change, 1000mating	
Interchangeability	$\leq 0.2$ dB	
Tensile strength	$> 50$ N	